

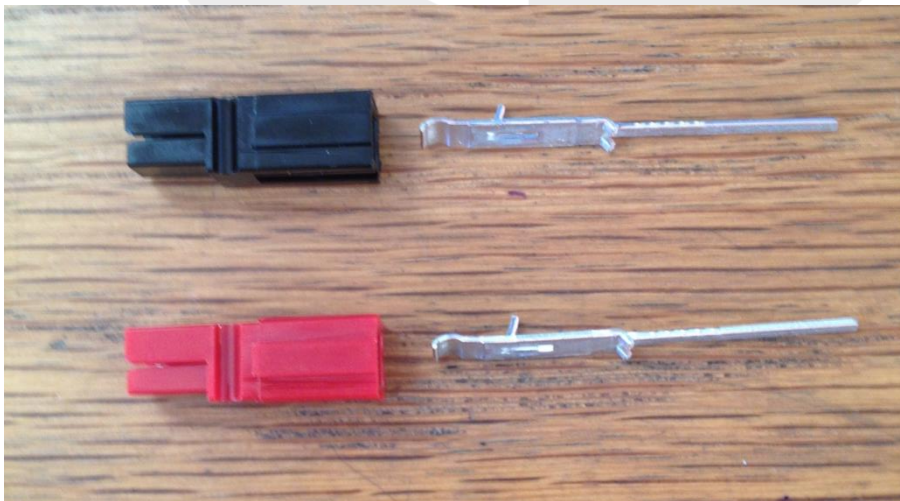
## SOTABEAMS POWERPOLE 3-WAY and 4-WAY INSTRUCTIONS

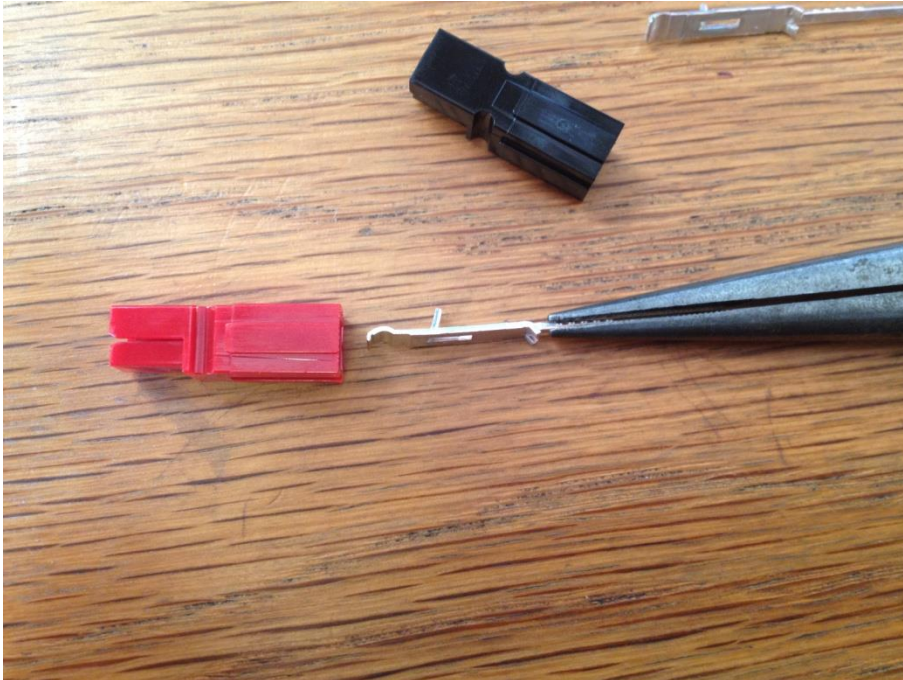
### Product Update 20-Jan-2014

We are now shipping this product with nylon spacers. These insert through the board and are fastened on the underside of the board with nylon nuts. The nylon spacers reduce the product weight.

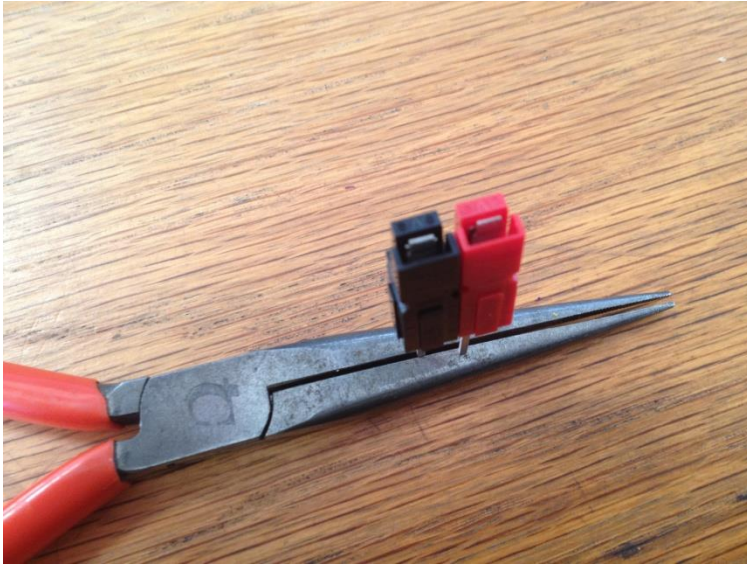
---

1. Slide the pins into the plug shells. This is best done with pliers. They click into place when seated correctly. Note that they only go in one way – see photo.





2. Pair up, the shells as shown, one black and one red. The shells will pair up in many ways so make sure that you get them right – as shown in the photograph. This is the “standard way” of using PowerPole connectors for ham radio use.



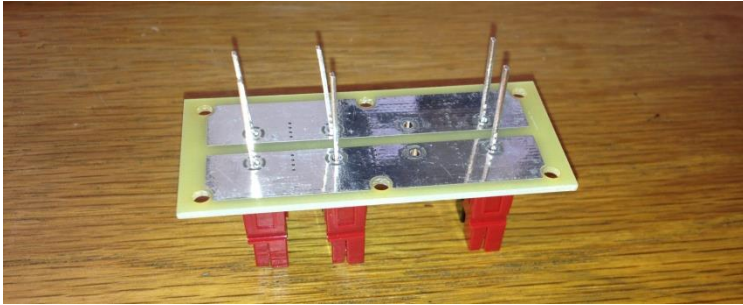
If you did not purchase the optional enclosure kit, skip to instruction 3.

*Enclosure 1. If you have the optional enclosure kit, mount the M3 spacers on the top side of the board **using the metal screws.***

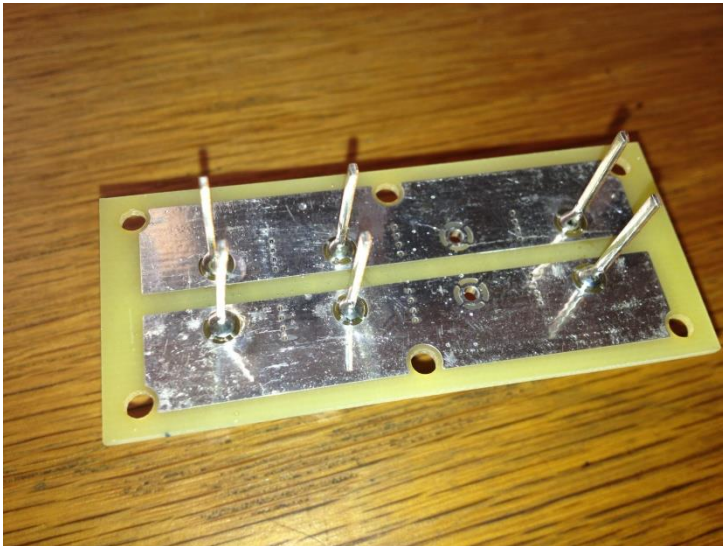
3. Insert the pairs into the PCB. Make sure that they are all the same way round.

4. Place the pcb on a flat surface making sure that the shells are sitting snug against the PCB.

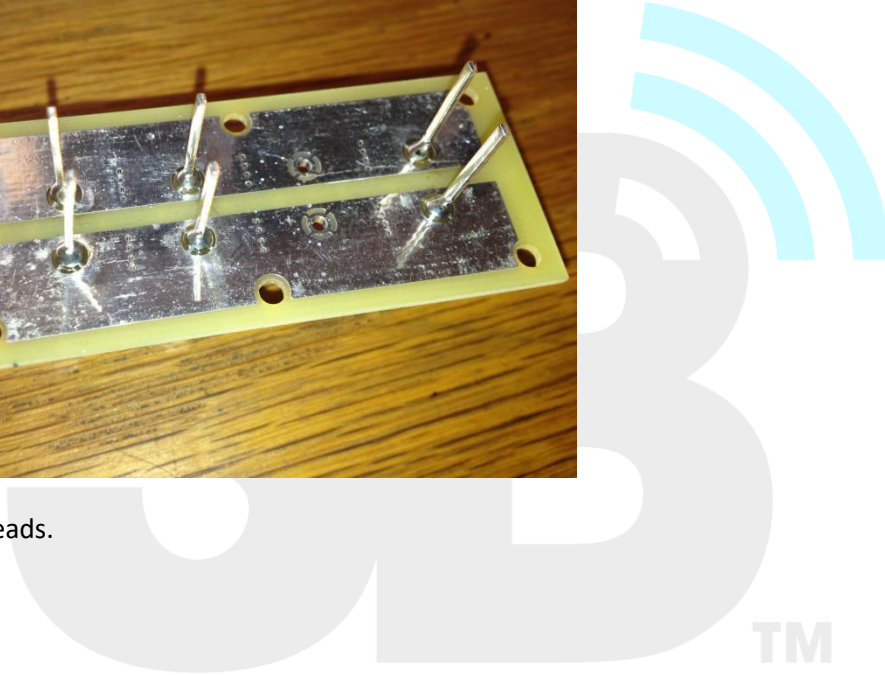


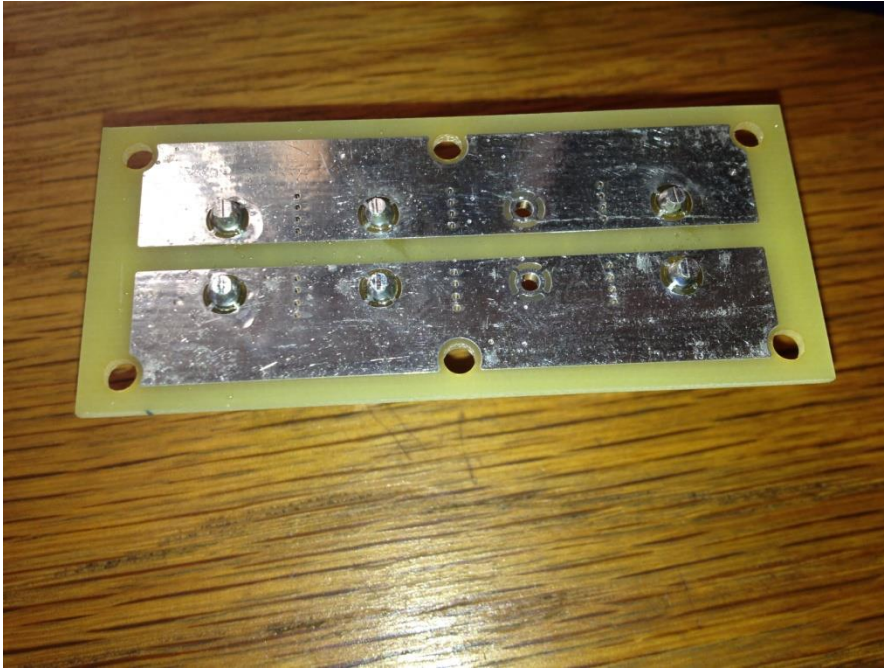


5. Solder all the pins. Use a 50 Watt soldering iron with a fairly large bit.



5. Trim the leads.





The board is now assembled. If you purchased the optional enclosure kit, continue with the steps below:

*E2. Check that all the edges of the laser-cut panel are smooth. Remove any rough edges with a fine file.*

*E3. Clean both sides of the front panel with a damp cotton cloth.*

*E4. Attach the front panel to the spacers using the six nylon screws. You may need to bend the PowerPole connectors slightly to get them to pass through the front panel. The Powerpole connectors have "shoulders" that need to pass through the front panel to get it to sit on the spacers. Some fiddling is usually required but do not use force!*

*E5 Take the lid off the plastic box and remove the bag of enclosure kit items inside.*

*E6. Attach the front panel of the PP 3-WAY or 4-WAY into the box using the four black self-tapping screws.*

#### Notes

The lid of the box and the blanking parts are not required and can be discarded.

If the front panel will not fit into the box, try turning it upside down. The laser cuts edges that are not completely at right angles.



### Using your Powerpole 4-Way or 3-Way

It's pretty straightforward to use these units. The only suggestion is that if you are connecting a high-current item, such as a 100 Watt transceiver, to a power supply then use adjacent Powerpoles to reduce any resistive losses.

